

# Recital Hall : 2-Lighting Equipment

## 2-1 Lighting System

1. Dimmer system : STRAND CD-80 SV
2. Circuit Type :  
029 circuits × 3.3 KW, 220V  
006 circuits × 5.5 KW, 220V
3. Control Console :  
ETC Ion Type 1000 ( DMX512× 2 , SUB×40 )

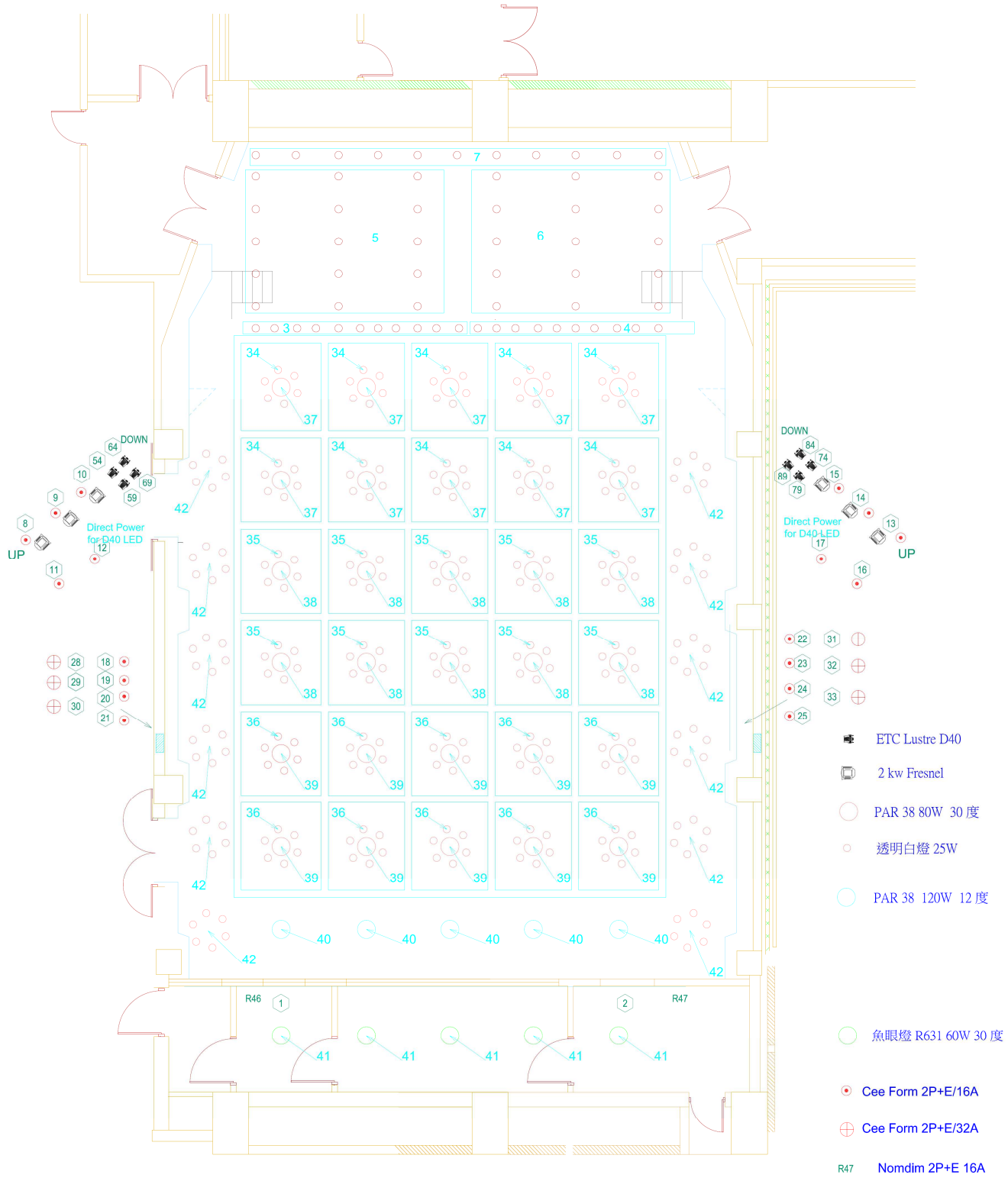
## 2-2 Lighting Fixture Dispose

| Position |                     | No.              | Fixture Type                  | Watt   | Amount |
|----------|---------------------|------------------|-------------------------------|--------|--------|
| F.O.H    | #FOLLOW SPOT ROOM/R | 1                | ETC 26°                       | 750 W  | 2      |
|          |                     |                  | MITAMA HUV208 ( FOLLOW SPOT ) | 2000 W | 1      |
|          | #FOLLOW SPOT ROOM/L | 2                | ETC 26°                       | 750 W  | 2      |
|          |                     |                  | MITAMA HUV208 ( FOLLOW SPOT ) | 2000 W | 1      |
|          | SIDE BOOTH/R        | 8→10             | COLORTRAN 2KW FRESNEL         | 2000 W | 3      |
|          |                     | 51, 56<br>61, 66 | ETC Selador Lustr+D40         | 110 W  | 4      |
|          | SIDE BOOTH/L        | 13→15            | COLORTRAN 2KW FRESNEL         | 2000 W | 3      |
|          |                     | 71, 76<br>81, 86 | ETC Selador Lustr+D40         | 110 W  | 4      |
| OVERHEAD | # 1 ROW             | 3→4              | PAR38 30°                     | 120 W  | 26     |
|          | # 2~6 ROW           | 5, 6             | PAR38 30°                     | 120 W  | 30     |
|          | #7 ROW              | 7                | PAR38 12°                     | 120 W  | 15     |

## 2-3 Dimmer Circuit Dispose

|              | Position                   | Circuit No. | Capacity | Non-dim | Note |
|--------------|----------------------------|-------------|----------|---------|------|
| F.O.H        | #FOLLOW SPOT ROOM/R        | 1           | 3.3 KW   | R46     |      |
|              | #FOLLOW SPOT ROOM/L        | 2           | 3.3 KW   | R47     |      |
|              | SIDE BOOTH/R               | 8→10        | 3.3 KW   |         |      |
|              |                            | 11 (spare)  | 3.3 KW   |         |      |
|              | SIDE BOOTH/L               | 13→15       | 3.3 KW   |         |      |
|              |                            | 16 (spare)  | 3.3 KW   |         |      |
|              | B1 /R                      | 18→21       | 3.3 KW   |         |      |
|              |                            | 28→30       | 5.5 KW   |         |      |
| B1 /L        | 22→25                      | 3.3 KW      |          |         |      |
|              | 31→33                      | 5.5 KW      |          |         |      |
| OCERHEAD     | # 1頂燈                      | 3→4         | 3.3 KW   |         |      |
|              | # 2~6頂燈                    | 5, 6        | 3.3 KW   |         |      |
|              | # 7頂燈                      | 7           | 3.3 KW   |         |      |
| Auditorium   | Auditorium Lighting Area   | 34→42       | 3.3 KW   |         |      |
| Control Room | Control Room Lighting Area | 43          | 3.3 KW   |         |      |

# 2-4 Circuit Dispose Chart



## 2-5 Follow Spot

Brand/ Type : MITAMA HUV208 ( 2000W )

Amount : 2

## 2-6 Auditorium Lighting Chart

### 1. Small Crystal Light

Amount : 42      Circuit No. : 34(outer) 、 35(inner) 、 37(both side)

### 2. Rear Row Wall-Light

Circuit No. : 36

### 3. Middle of Rear Row Wall-Light

Circuit No. : 37

## 2-7 Circuit Outlet & Plug Type

CEE FORM 16A 、 CEE FORM 32A : 2P+E /220V

## 2-8 Size of Color Frame

5" Frame (15CM×15CM)

ETC 19° 、 26° 、 36° 、 50°

8 1/2" Frame (21CM×21CM)

1KW FRESNEL 、 1KW PC 、 250W BEAM LIGHT

9 1/2" Frame (24CM×24CM)

2KW FRESNEL

## 2-9 Lighting Focus Equipment

Brand/Type : UPRIGHT UL-32 ( 110 V )

Amount : 1部

Maximum lifting distance :

32feet ( 9.72M )

Maximum working height :

38feet ( 11.54M )

Maximum loads :

300 pound ( 136Kg )

Working platform size :

0.66M×0.66M

## 2-10 Stage Work Light

Flood (500 watt)

Position :

One on each side of Box Boom

Controller location :

Both side of the Stage

## 2-11 Auxiliary Power Supplies

Stage right :

CHSR481 PANEL 3 \$ 4W 208 / 120V 30A×4