

Sound Equipment

Sound Control Room Equipment

Items	Brand/ Type	Amount	Note
Mixer	YAMAHA QL5	1	32 microphone Channel 16 Mix Outputs 8 Matrix 1 Stereo Out
CD player	TASCAM CD-500B	2	For performance audio playback only
CD-RW	TASCAM SS-CDR200	1	For performance audio playback, recording use, recording fee please see“Venue Rental Handbook” .
Control Room monitor	GENELEC 8050A	2	
Wireless Microphone / Mini Microphone	SHURE ULXD4Q	4	Extra rental fee required. Please see “Venue Rental Handbook” .

Auditorium Sound System

Items	Brand/ Type	Amount	Location	Note
Active speaker-Wide angle	Meyer UPA-1P	4	Above the tension	Position adjustment as the audience area
Microphone Circuits		78 circuits	Around Stage and the Wall	Microphone Socket Layout in Figure 1
MULTI Cable	16 circuits/set	1		
Network	Belden Cat6 RJ45 outlet	8		

Suspension Microphone

Brand	Type	Amount	Location	Note
SCHOEPS	MSTC64g	1	Above the tension	Dead hung suspended microphones for monitoring and recording use

Microphone

Brand	Model	Amount	Type	Note
NEUMANN	U87AI	3	Condenser	Supply to the National Theatre, Concert Hall, Experimental Theatre and Recital Hall, the rental fee please see " Venue Rental Handbook"
NEUMANN	KM-184	4	Condenser	
AKG	D330BT	10	Dynamic	
AKG	C3000	3	Condenser	
AKG	C562BL	3	Condenser	
AKG	D112	4	Dynamic	
AKG	C414B-XLS	8	Condenser	
SHURE	SM57	10	Dynamic	
SHURE	SM58	6	Dynamic	
SHURE	SM58S	5	Dynamic	
SHURE	BETA 57A	6	Dynamic	
SHURE	BETA 58A	5	Dynamic	
SHURE	BETA 91	2	Dynamic	
SHURE	PGDMK6-XLR	1set	For Jazz drum set	
SENNHEISER	MD-441U	12	Dynamic	
SENNHEISER	MKH-70	6	Condenser SHOTGUN	
CROWN	PCC-160	5	Condenser	
SCHOEPS	CMC6+MK4g	2	Condenser	

Mixer 、 Equalizer 、 Effect 、 Sound processor

Items	Brand/ Type	Amount	Note
Compress / Limiter	dbx 160A	4	Supply to the National Theatre, Concert Hall, Experimental Theatre and Recital Hall, the rental fee please see " Venue Rental Handbook"
	dbx 1046	4	
Expander	dbx 1074	4	
Graphic Equalizer	Klark Teknik DN360	4	
Parameter Equalizer	Klark Teknik DN410	4	
Effect	TC Electronic M3000	1	
	Lexicon PCM91	3	
	YAMAHA SPX2000	1	
Delay	TC Electronic D2	4	
Signal converter	Klark Teknik DN100	10	
Analog mixing console	MIDAS VENICE 320	1	
	MIDAS VENICE 240	1	
	MIDAS VENICE 160	2	
Digital mixing console	YAMAHA PM5D	1	
	YAMAHA M7CL	2	
	YAMAHA QL5	1	
	YAMAHA QL1	1	

Loud Speaker & Stage Monitor

Items	Brand/ Type	Amount	Note
Active speaker-Wide angle	MEYER SOUND UPA-1P	6	Supply to the National Theatre, Concert Hall, Experimental Theatre and Recital Hall, the rental fee please see " Venue Rental Handbook"
Active speaker-Wide angle	MEYER SOUND UPJ-1P	4	
Active speaker-Stage monitor	MEYER SOUND UM-1P	9	
Active subwoofer speaker	MEYER SOUND USW-1P	2	
Active front fill speaker	MEYER SOUND UPM-1P	4	
Active speaker monitor	YAMAHA MSP5A	3	

Microphone Stand

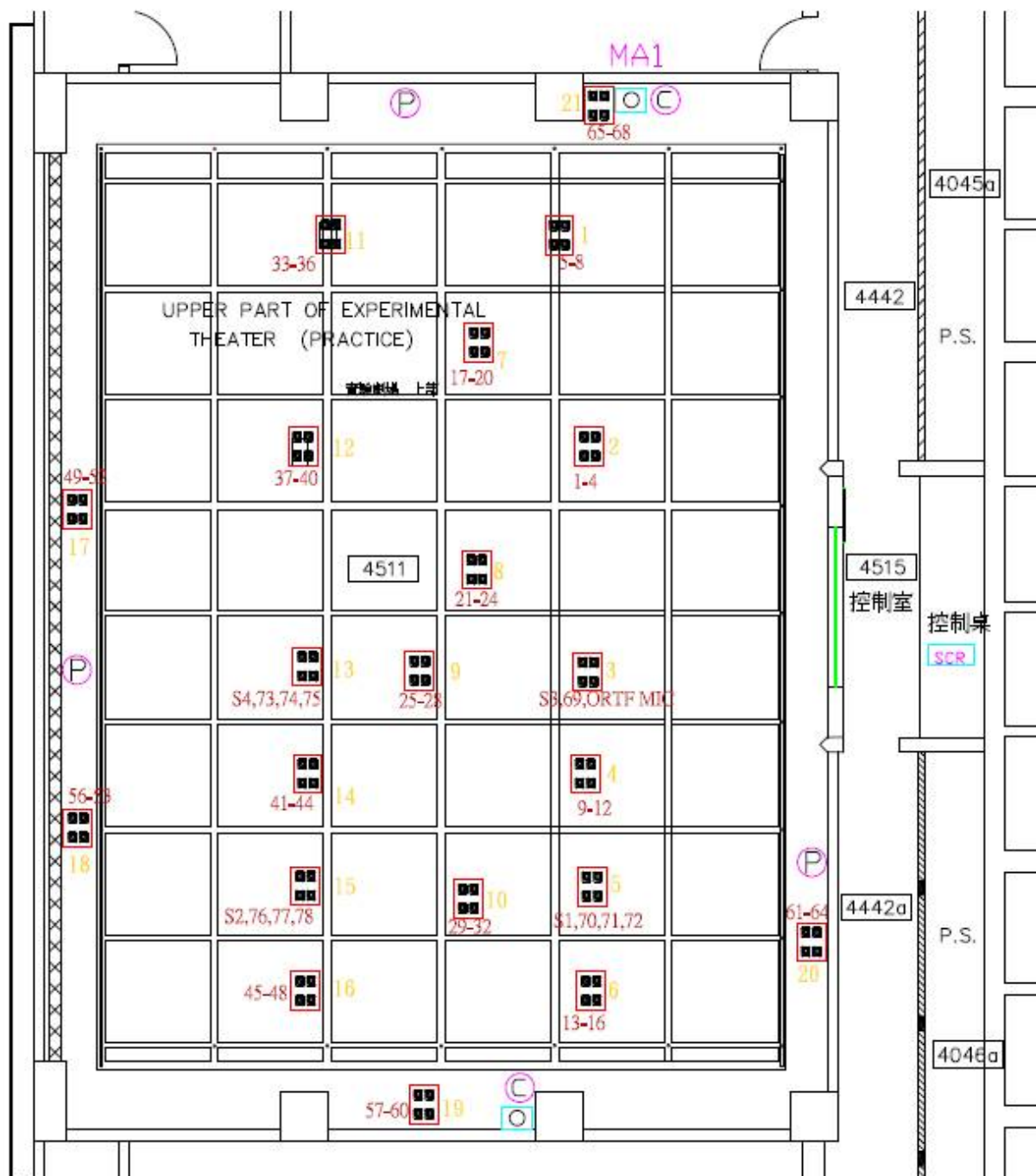
Brand	Type	Amount	Note
AKG	ST305	2	30-60cm extension arm
AKG	ST305	2	15-30cm extension arm
PHILIPS	T	10	

Intercom System

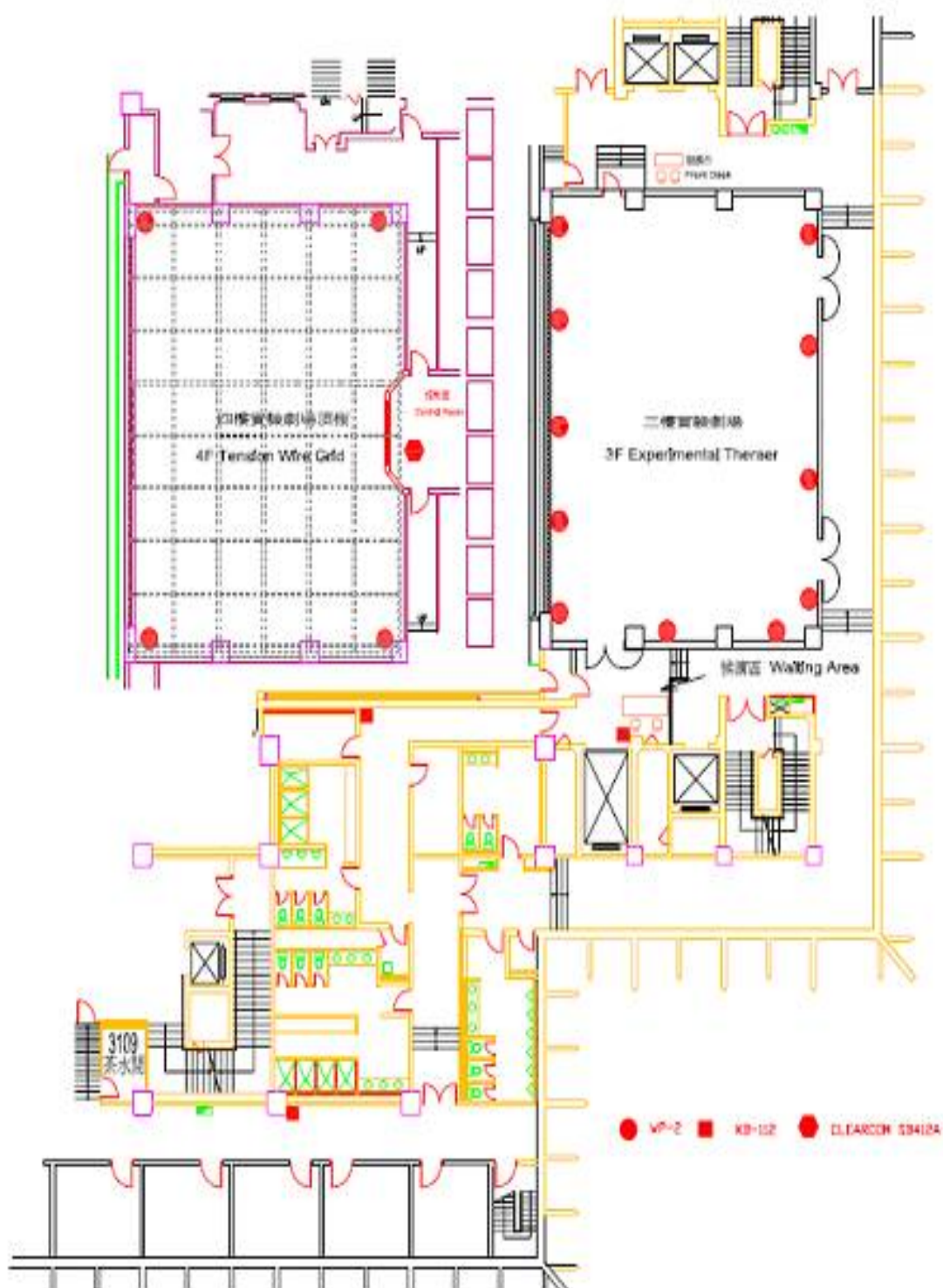
Items	Brand/ Type	Amount	Position	Note
Intercom system main station	Clear-Com SB-704	1	4F control room	Intercom System Socket Layout in Figure 2
	WP-2	12	8 outlets in 3F theater 4 outlets on 4F grid	
Intercom system sub- station (with build in microphone &speaker)	Clear-Com KB-702	1	manager desk	
	Clear-Com KB-701	1	(Stage back stage) 4F control room	
	Clear-Com KB-701	1	In front of stage manager’s room (back stage)	
	Clear-Com KB-701	1	In front of dressing room (back stage)	
	Clear-Com KB-702	1	3F stage manager office Information desk	
Portable station	Clear-Com RS-601 BSP-1	10	4F control room	
Single ear headset	TELEX PH-1			

Microphone Socket Layout in Figure 1

The numbers shown in the chart are the microphone line circuit number.



Intercom System Socket Layout in Figure 2



Video System

Video Control Room Equipment

Items	Brand/Type	Amount	Note
Digital HD Video Camera Set	Camera Power Supplier IKEGAMI BSF-55	1	1.Set on the back of the auditorium
	Camera (18X) IKEGAMI HC-HD300	1	2.Single camera
	IKEGAMI OCP-100	1	3.HD/SD-SDI&Composite output 4.For BD video output for file recording 、performing group monitoring and late audience watching. 5. Please note that the relevant fee will be used in accordance with the “Venue Rental Handbook”
Image signal view waveform vector monitor	PROTECH HDF-700	1	HD LCD waveform monitor
DDR Recorder	8T Disk array	1	Provide program video recording service, the service rate please see the “Venue Rental Handbook”
Video Monitor	17 吋 LCD HDTV IKEGAMI HLM-1704WR	1	
Recording Monitor	9 吋 LCD HDTV IKEGAMI HLM-905WR	3	
RF Converter	WINERSAT WAM-860SL	2	Convert the video image signal to RF signal for both back stage & FOH TV monitors. CH.13 : Backstage area CH.14 : FOH area, for program information clips playback

Stage Monitor System (MATV)

Location	Brand/ Type	Amount	Note
3F Front of house audience area	CHIMEI LCD 40"	1	The video camera above the auditorium is used to record the performance and provide the stage image for the back stage and front of house monitor use.
3F Front of house information counter	CHIMEI LCD 40"	1	
3F Back stage standby area	CHIMEI LCD 50"	1	
3F Back stage dressing room	CHIMEI LCD 40"	1	
4F Control room	SAMPO LCD 20"	1	
3F Hallway standby area	CHIMEI LCD 40"	1	
3F Back stage manager desk	CHIMEI LCD 32"	1	

Projector, Projection Screen

Items	Brand/ Type	Amount	Note
6000 ANSI lumen (Contains standard lens 1.8-2.4:1) Another can be replaced 1.3-1.8: 1 lens two	Panasonic PT-D5700U	3	Supply to the National Theatre, Concert Hall, Experimental Theatre and Recital Hall, the rental fee please see “Venue Rental Handbook”
5500 ANSI lumen	EPSON EB-2065	4	
5000 ANSI lumen	EPSON EB-1960	2	
4500 ANSI lumen	EPSON EB-4950WU(HD)	2	
3600 ANSI lumen	EPSON EB-42	2	
3500 ANSI lumen	EPSON EB-685W (Short focus type)	2	
80” Front Projection Screen	DA-LITESP-80 Pneumatic cylinders 180 cm *135 cm	4	
100” Front Projection Screen	DA-LITESP-100 Pneumatic cylinders 214cm *163 cm	4	
100” Rear Projection Screen	The Screen Works E-Z Folding Gray color 214 cm *163 cm	2	
150” Front and Rear Projection Screen	DA-LITE / Folding 305 cm*229 cm	2	
210” Front and Rear Projection Screen	DA-LITE / Folding 427 cm *320 cm	1	
300” Front Projection Screen	DA-LITE TRUSS DELUXE / Folding 640 cm *488 cm	1	

Note Book Computer

Items	Brand/ Type	Amount	Note
ASUS	A8S	2	Supply to the National Theatre, Concert Hall, Experimental Theatre and Recital Hall, the rental fee please see “ Venue Rental Handbook” . The computer is for projecting performance images & information use only
ASUS	A8Ja	1	
ASUS	X450J	2	